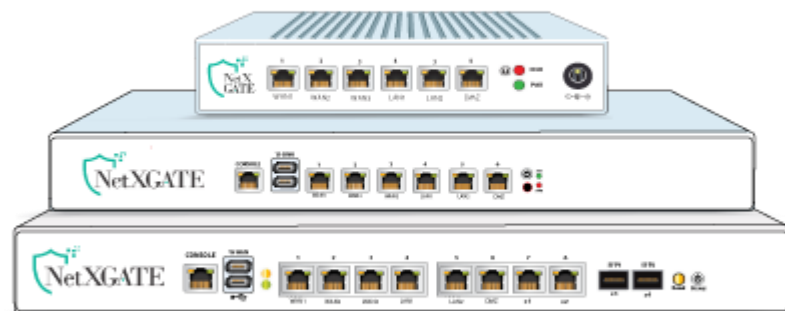




# Cyber Security Products Series



- Next Generation Firewall (NGFW)
- Secure HotSPOT Gateway -AAA
- Secure Access SD-WAN
- Work From Home Solution



# Who are we ?

- **NetXGATE** is an Indian cyber security product company that develop (70% MII) & market Unified Network gateway solutions. Development and Support centre at Bangalore & Delhi with a Global outreach with 10+ years in business and technical experience with 1K+ customers world wide and specialized in AAA and air-gapped SD-WAN Solutions .
- **Our Products** :Next Generation Firewall (NGFW), Secure HotSPOT Gateway (AAA) & Secure Access Gateway (SD-WAN).
- **Wide range of models serve small, medium and large Network across verticals like -**
  - Government Depts. / Defense / Research Organizations
  - IT/ITES
  - Education
  - BFSI
  - Retail & Logistics / Transport
  - Healthcare & Hospitality
  - Enterprises
  - Events / Smart & Safe City
  - Power & Energy
- **NetXGATE** offers the combination of NGFW, AAA & SD-WAN for multi branch connectivity, manageability & Control.
- The NGFW meets related compliance & feature sets so also a life time free analyzer as part of the product bundle.

# NG Next-Generation Firewall (NGFW) Series

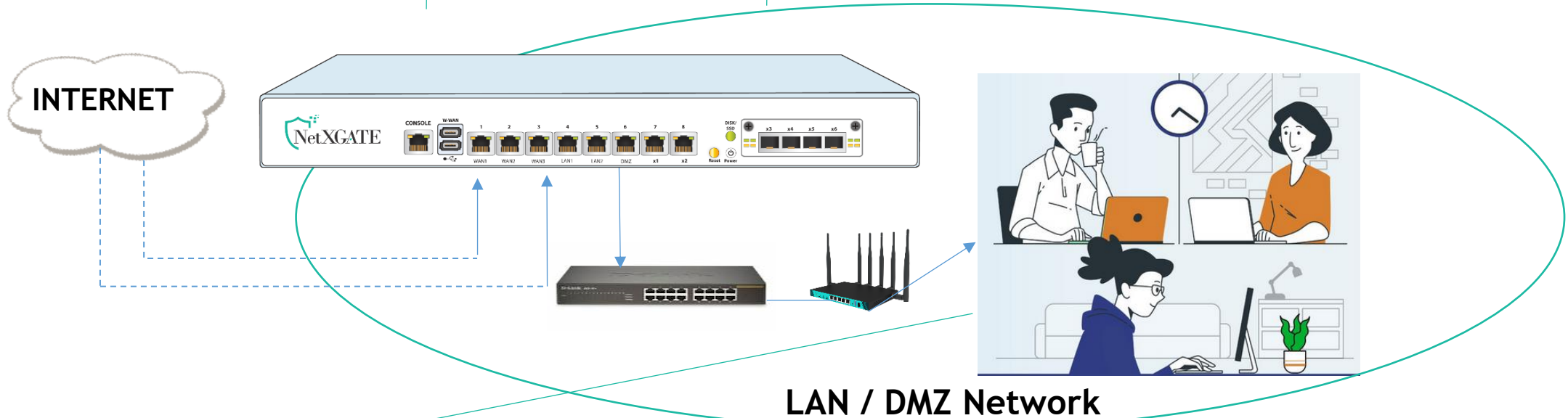
# NGFW Offers :-



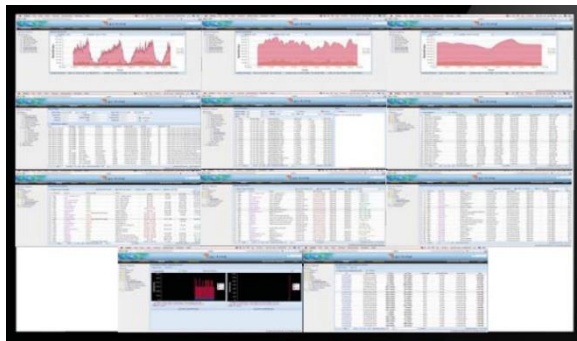
Perimeter Security

Cyber Security

LAN Security



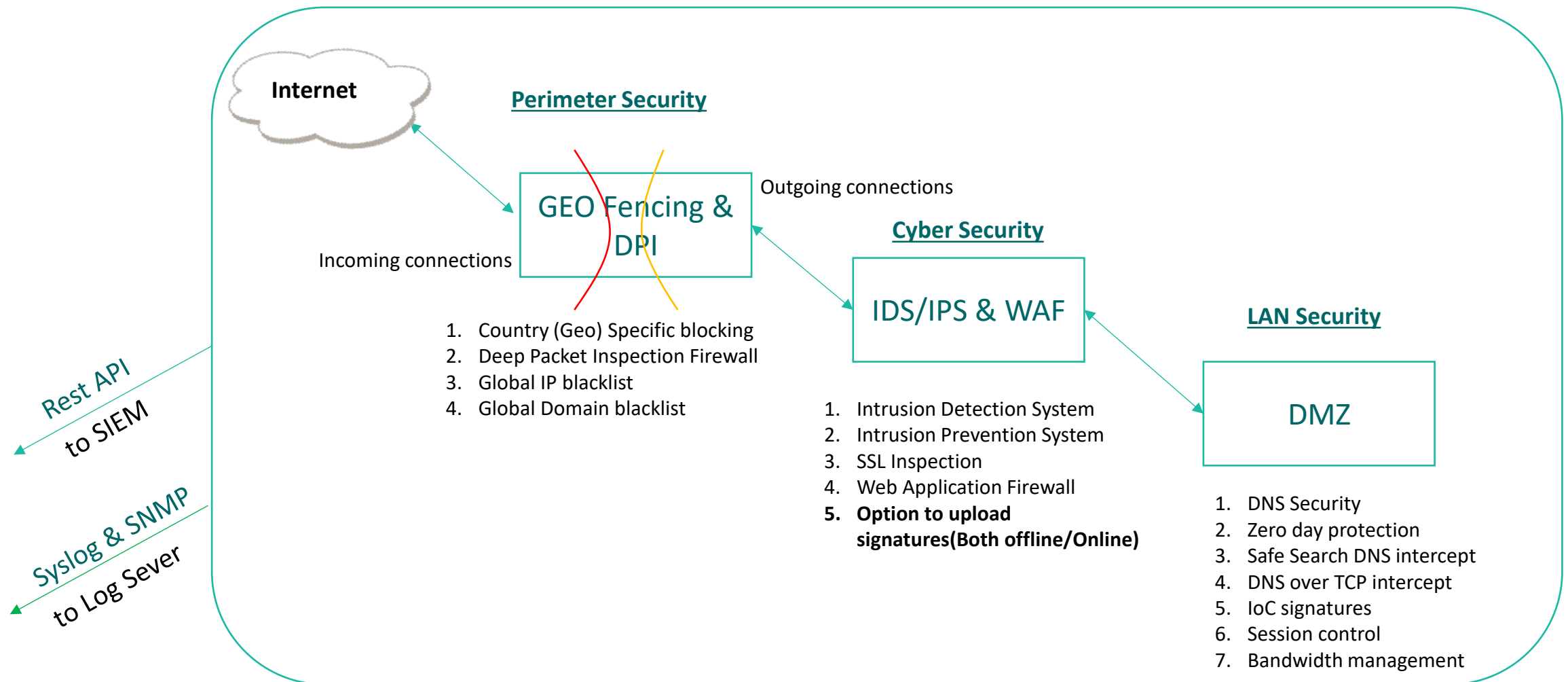
Detailed User level logs and reports



## LAN / DMZ Network

- Only authorized users / devices are allowed to access Internet.
- Time, Usage and bandwidth based access to users.
- Multiple ISP link supported for Auto Load Balancing & Failover.
- Inbound load balancing distributes inbound Data traffic over Multiple WAN Link .
- Mobile Device blocking, Domain, URL, Application blocking
- Alert on failures and misuse of Internet.

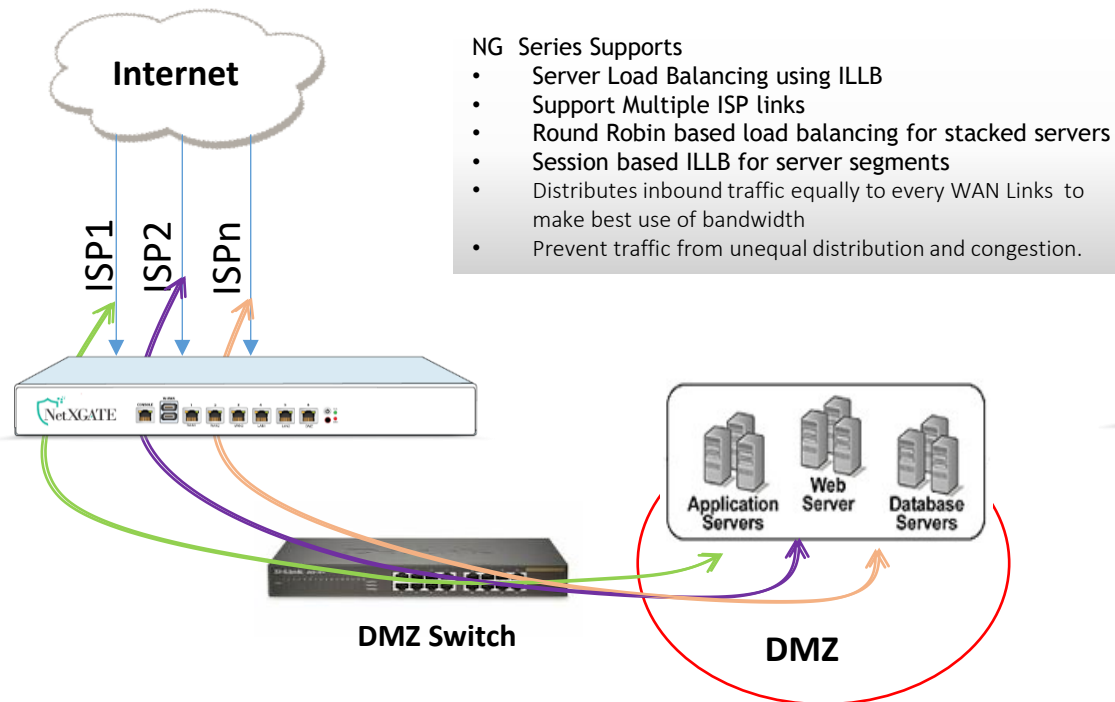
# Connection Flow with 3 Layers of Security



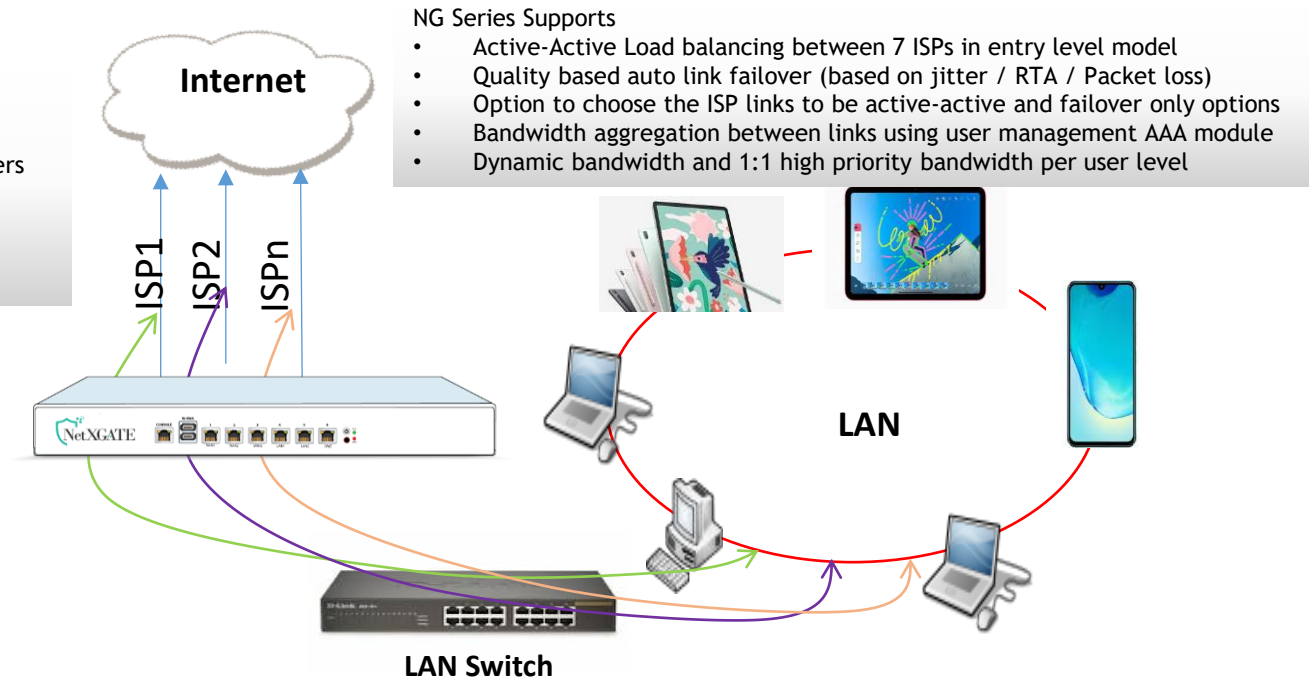
# Link Load balancing

## Maximize the Performance

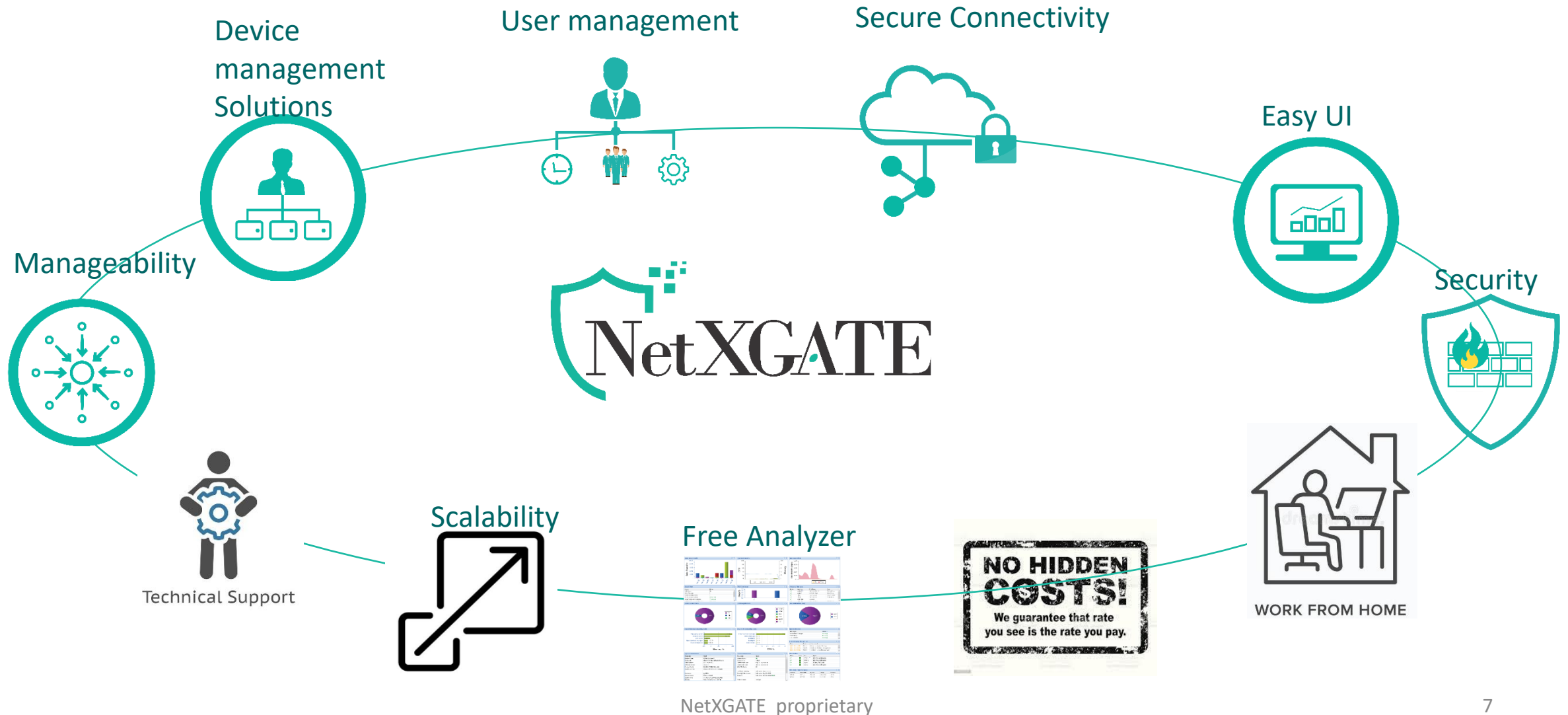
### **ILLB** (Inbound Link Load Balancing)

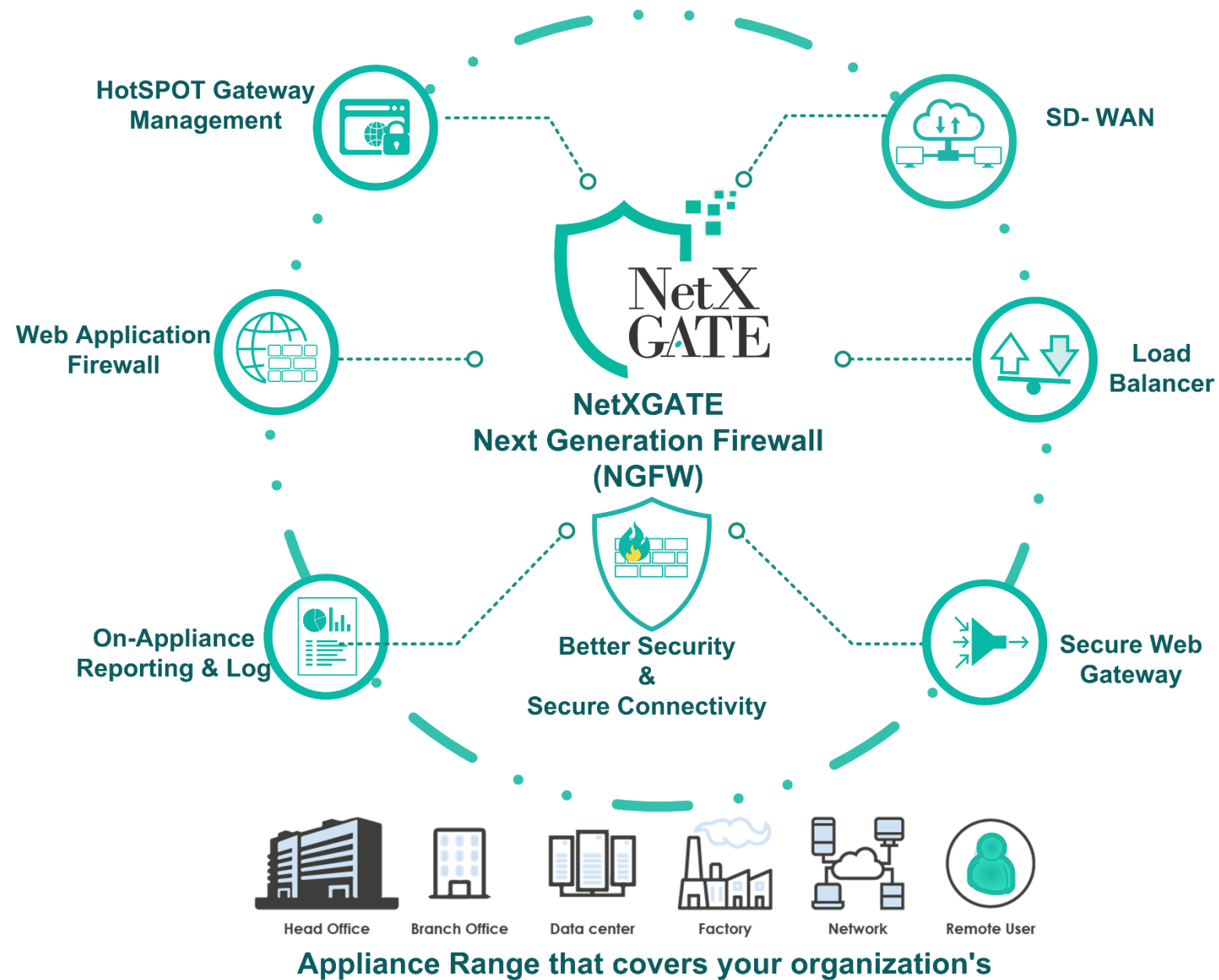


### **WLLB** (Active-Active Load Balancing)



# Why NetXGATE NGFW is special?







## One Office - One Gateway

- ✓ Consolidate Networking, Security, SD-WAN & Monitoring into a single appliance.
- ✓ NetXGATE NGFW provide everything that you would need from user authentication to controlling Internet access. All basic networking services such as DHCP, DNS, NAT & Firewall are provided. So is an advanced IP router that can directly take a link from any ISP.

## User Centric Controls

- ✓ Sick of creating policies based on IP addresses, VLAN ids & the like? NetXGATE NGFW offer a 100% User centric architecture. Every policy, be it a content filter or AAA , is configured around a user account . *In the end, you are dealing with people not IP addresses. A whole new way of managing your people & how they access the network, where and on which Device , OS & Browser\*.*

# Benefits at a Glance

## NextGen All-In-One Platform

✓ **Fully integrated Next-Gen Firewall feature set:** Unified firewall policy , web filter, Intrusion prevention system, Malware filter & GW Anti-virus, On-Appliance Log & reports .

✓ **Control, Secure & Manage Internet Usage** with **Granular web & Application control** of network traffic for maximum network security.

✓ **Inbuilt AAA with Captive Portal-Authenticate** users & devices : Set who has access, where and on what device.

✓ **Inbuilt SD-WAN : Networking ,meet Security** - Simplify networking in a distributed org., Safe and secure access for offices, branches and remote sites.

✓ **Signature database Updates-** Support both Offline and Online Mode (For Defense or Paramilitary forces)

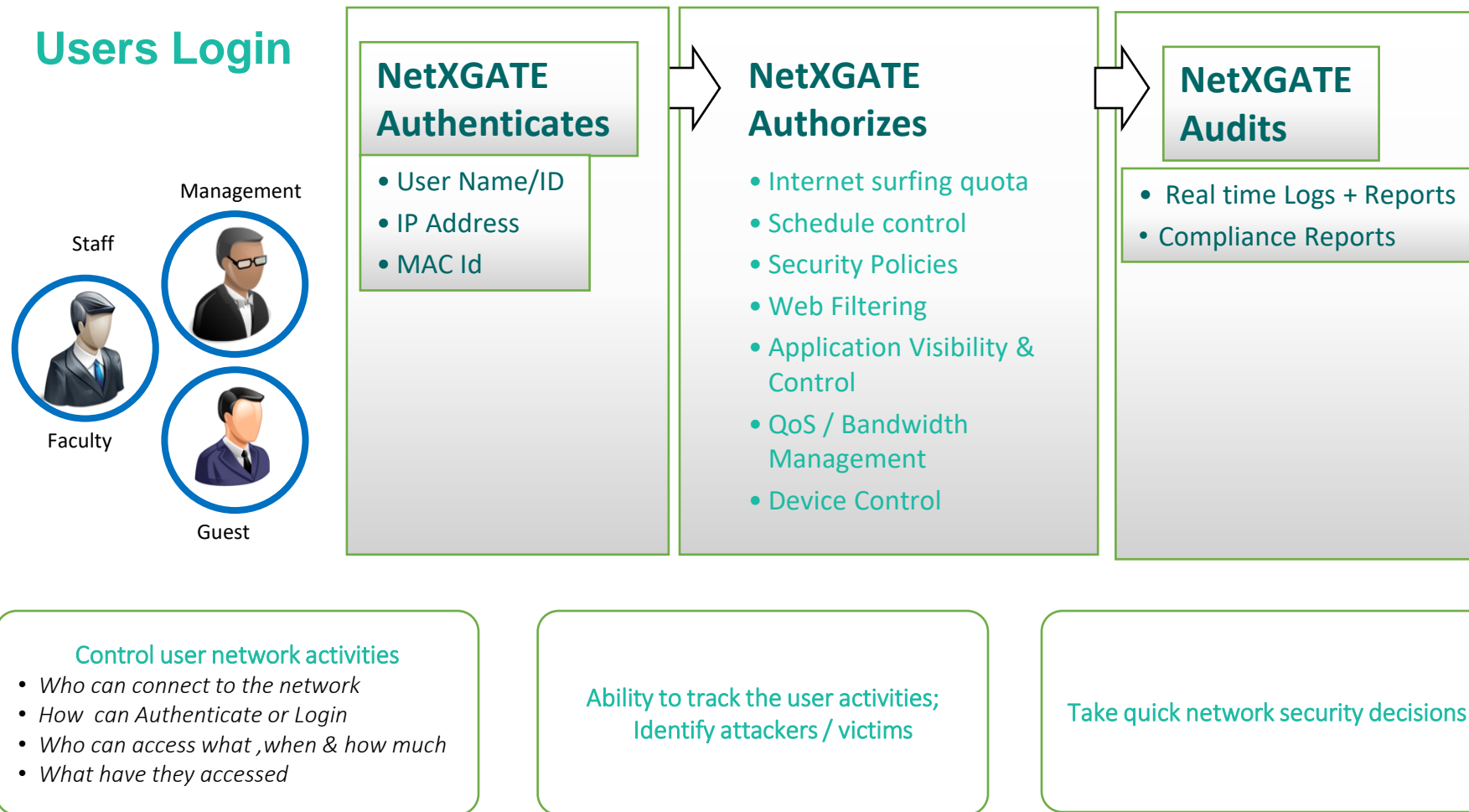
✓ **Improve Budget leverage by reducing** - HW and SW Licensing & Maintenance costs

✓ **Security »Made in India «**

## Secure HotSPOT Gateway (AAA)

To manage user access, enforce user policies and privileges, and measure the consumption of network resources.

# Authentication, Authorization, and Accounting (AAA)



- Create a Bandwidth policy/ Time Policy / Data Transfer Quota Policy on a combination of
  - *User or User Group*
  - *Mac , IP or IP Group*
  - *Allows great flexibility , visibility and control*
- Bandwidth sharing : Reserved and Dynamic
- Schedule-based bandwidth allocation

### Bandwidth Management ( Upload/Download )

- Allocate dedicated bandwidth



MD

**Unlimited** – Download  
5 Mbps- Upload  
Type – Reserved 5 Mbps



Faculty

5 Mbps – Download  
2 Mbps- Upload  
Type – Dynamic



Application  
Servers

2 Mbps – Download  
1 Mbps - Upload  
Night time - **Unlimited**

### Time and Data Transfer Quota Management

- *When user exceed the Data Transfer Quota or Time Quota Either it reduce the Bandwidth or disconnected from Internet.*



Student

3GB / 24 Hour



Staff

8 Hour / Day



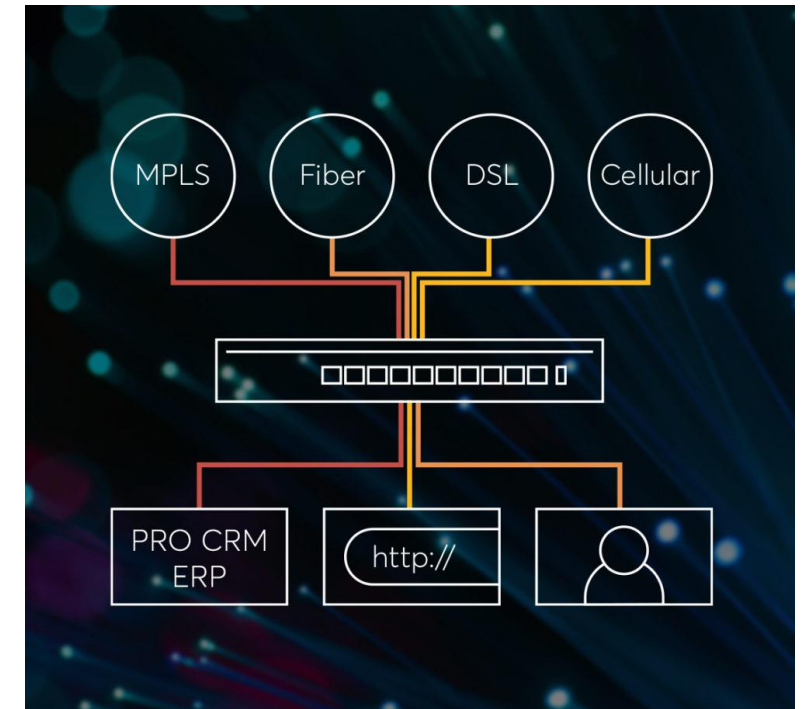
Guest

Limited Access

# Secure Access Gateway (SD-WAN)

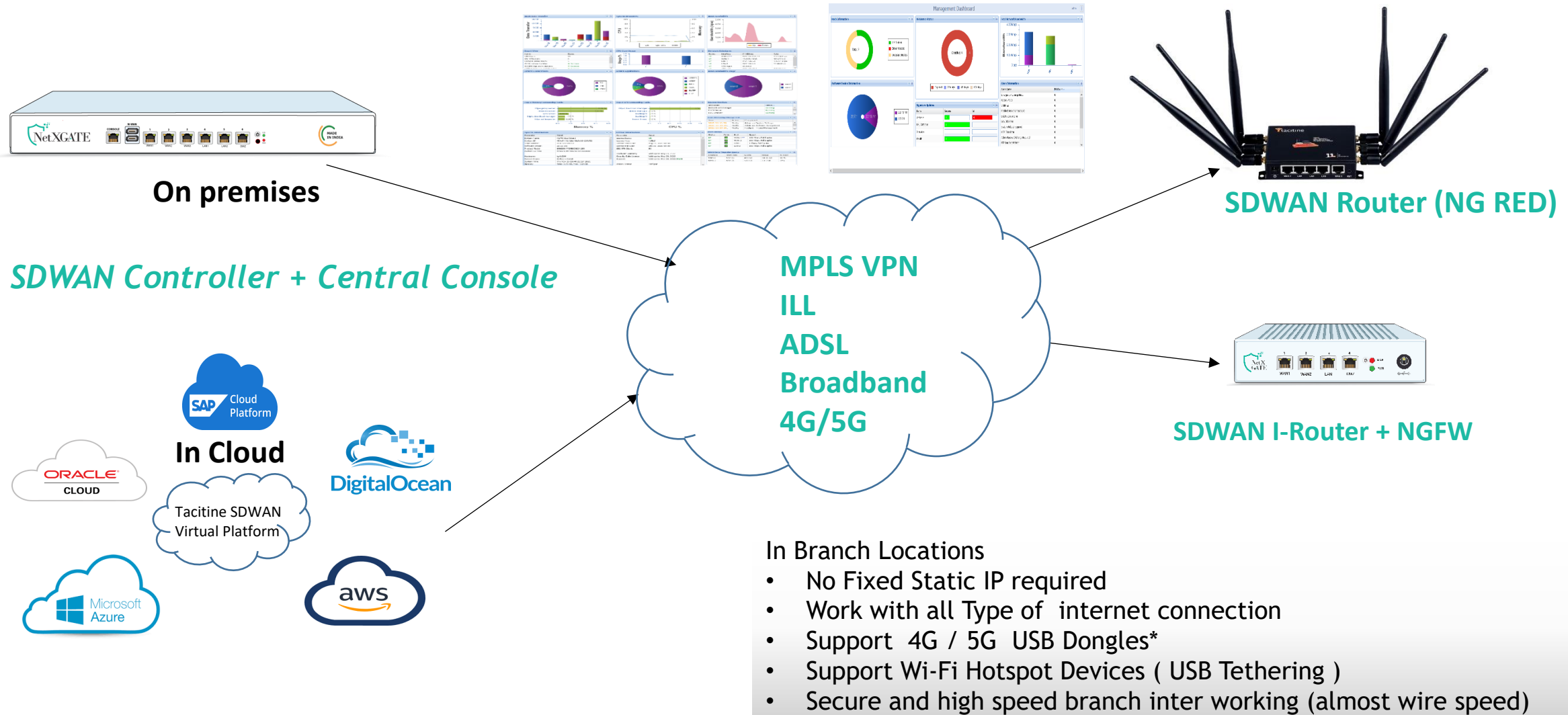
100% uptime to application servers

- By using encrypted tunnel, branch offices gain secure Local network access to cloud resources.
- SD-WAN makes these branch offices VPN faster and more affordable by combining the bandwidth of multiple connections into a single logical WAN connection.

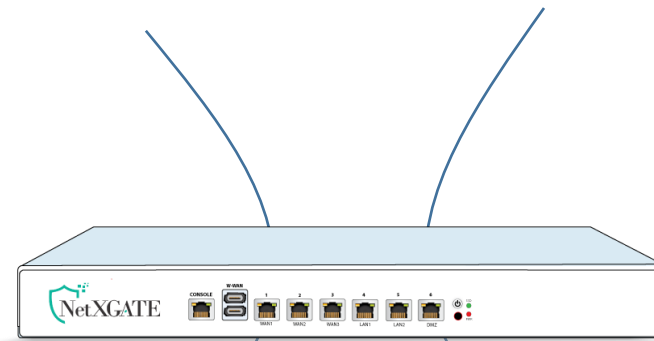


# NetXGATE SD-WAN

## Get Comprehensive Security for a Branch Office



# SD-WAN Controller



## SDWAN Controller

## Data Plane

- Can be a separate Product

- Enterprise Tunnel
- Split Tunnel
- Application Tunnel
- WAN definition

- Can be hosted in cloud
- Part of firewall as add-on
- Part of SD-WAN controller as add-on

- NetXGATE Proprietary control Plane

- Monitor / Manage / Control both RED SD-WAN Router & NGFW

- Group control
- Role based login control
- No. of node monitoring control
- Login control (no. of login)
- Super admin and dashboard admin

## Control Deployment Option

1. Appliance Based
2. VM (Virtual Instance)
3. Support for AWS, Azure, bare metal etc

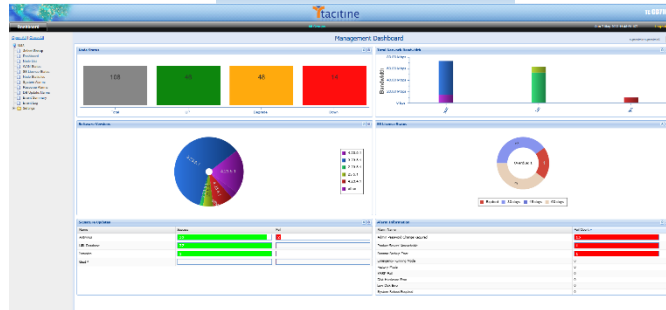


# NMS & On-Appliance Logging and Reporting

# Network Management System



## NMS Dashboard



## NMS Highlights

- Can be hosted in cloud
- Part of NGFW as add-on
- NetxGATE Proprietary NMS
- Monitor/Manage/Control both Red Junior SD-WAN Router & NGFW
- Group control
- Role based login control
- No. of node monitoring control
- Login control (no. of login)
- Super admin and dashboard admin

## Node Status

Node ID	Node Name	Node Type	Node Status	Node Group	Node Location	Node IP	Node MAC	Node Vendor	Node Model
1	Node 1	Router	Online	Group 1	Location 1	192.168.1.1	00:00:00:00:00:00	Vendor 1	Model 1
2	Node 2	Router	Online	Group 2	Location 2	192.168.2.1	00:00:00:00:00:00	Vendor 2	Model 2
3	Node 3	Router	Online	Group 3	Location 3	192.168.3.1	00:00:00:00:00:00	Vendor 3	Model 3
4	Node 4	Router	Online	Group 4	Location 4	192.168.4.1	00:00:00:00:00:00	Vendor 4	Model 4
5	Node 5	Router	Online	Group 5	Location 5	192.168.5.1	00:00:00:00:00:00	Vendor 5	Model 5
6	Node 6	Router	Online	Group 6	Location 6	192.168.6.1	00:00:00:00:00:00	Vendor 6	Model 6
7	Node 7	Router	Online	Group 7	Location 7	192.168.7.1	00:00:00:00:00:00	Vendor 7	Model 7
8	Node 8	Router	Online	Group 8	Location 8	192.168.8.1	00:00:00:00:00:00	Vendor 8	Model 8
9	Node 9	Router	Online	Group 9	Location 9	192.168.9.1	00:00:00:00:00:00	Vendor 9	Model 9
10	Node 10	Router	Online	Group 10	Location 10	192.168.10.1	00:00:00:00:00:00	Vendor 10	Model 10

## WAN (ISP) Status

WAN ID	WAN Name	WAN Type	WAN Status	WAN Group	WAN Location	WAN IP	WAN MAC	WAN Vendor	WAN Model
1	WAN 1	ISP 1	Online	Group 1	Location 1	192.168.1.1	00:00:00:00:00:00	Vendor 1	Model 1
2	WAN 2	ISP 2	Online	Group 2	Location 2	192.168.2.1	00:00:00:00:00:00	Vendor 2	Model 2
3	WAN 3	ISP 3	Online	Group 3	Location 3	192.168.3.1	00:00:00:00:00:00	Vendor 3	Model 3
4	WAN 4	ISP 4	Online	Group 4	Location 4	192.168.4.1	00:00:00:00:00:00	Vendor 4	Model 4
5	WAN 5	ISP 5	Online	Group 5	Location 5	192.168.5.1	00:00:00:00:00:00	Vendor 5	Model 5
6	WAN 6	ISP 6	Online	Group 6	Location 6	192.168.6.1	00:00:00:00:00:00	Vendor 6	Model 6
7	WAN 7	ISP 7	Online	Group 7	Location 7	192.168.7.1	00:00:00:00:00:00	Vendor 7	Model 7
8	WAN 8	ISP 8	Online	Group 8	Location 8	192.168.8.1	00:00:00:00:00:00	Vendor 8	Model 8
9	WAN 9	ISP 9	Online	Group 9	Location 9	192.168.9.1	00:00:00:00:00:00	Vendor 9	Model 9
10	WAN 10	ISP 10	Online	Group 10	Location 10	192.168.10.1	00:00:00:00:00:00	Vendor 10	Model 10

## Event Log

Event ID	Event Name	Event Type	Event Status	Event Group	Event Location	Event IP	Event MAC	Event Vendor	Event Model
1	Event 1	Info	Success	Group 1	Location 1	192.168.1.1	00:00:00:00:00:00	Vendor 1	Model 1
2	Event 2	Warning	Failure	Group 2	Location 2	192.168.2.1	00:00:00:00:00:00	Vendor 2	Model 2
3	Event 3	Error	Failure	Group 3	Location 3	192.168.3.1	00:00:00:00:00:00	Vendor 3	Model 3
4	Event 4	Info	Success	Group 4	Location 4	192.168.4.1	00:00:00:00:00:00	Vendor 4	Model 4
5	Event 5	Warning	Failure	Group 5	Location 5	192.168.5.1	00:00:00:00:00:00	Vendor 5	Model 5
6	Event 6	Error	Failure	Group 6	Location 6	192.168.6.1	00:00:00:00:00:00	Vendor 6	Model 6
7	Event 7	Info	Success	Group 7	Location 7	192.168.7.1	00:00:00:00:00:00	Vendor 7	Model 7
8	Event 8	Warning	Failure	Group 8	Location 8	192.168.8.1	00:00:00:00:00:00	Vendor 8	Model 8
9	Event 9	Error	Failure	Group 9	Location 9	192.168.9.1	00:00:00:00:00:00	Vendor 9	Model 9
10	Event 10	Info	Success	Group 10	Location 10	192.168.10.1	00:00:00:00:00:00	Vendor 10	Model 10

- Will monitor only NetXGATE Cyber Security Products
- Groupwise Dashboard - Flash based on groups
- Zero Touch Provisioning
- Auto discovery of nodes based on NMS domain name
- Node Status with event logs
- Configured WAN status (up|down|degrade) modes
- SS License status & Resource alarms
- Event logs summary & DB updates alarms

# Reporting and Beyond: Need to know with just 1-click

## Interface, Traffic & Security Dashboard

- Monitor network usage down to *application or user level*
- Historical web usage reports based on *users, sites visited*
- Monitoring reports for *SLA management*
- Network status view and *incident history*

Dashboard Configuration Status Reports Administration Wed 25 Jun 2014 19:07:54 IST Logout

Open All | Close All

Reports

Report

- Web Browsing
- SSL-VPN Server
- PPTP Server
- IDS / IPS
- Bandwidth Meter
- Bandwidth Usage
- Network Link State
- Config Change
- Admin User Sessions
- System Restart
- Digest Archive

Daily - Detail : 2014-06-24 00:00:00 - 2014-06-24 23:59:59

Today Daily Weekly Monthly CSV Export Close

Time	IP Address	User	Group Name	MAC Address	Total Bytes	Domain	Mime Type	Category	Action	URL
2014-06-24 14:44:14	192.168.14.56	manindra_36...	Default	-	9.96 MB	www.ele.uri.edu	application/vnd.ms-pow...	-	-	http://www.ele.uri.edu/courses/bme281/F12/3e...
2014-06-24 02:26:18	192.168.14.84	sanjay_205	Default	-	9.94 MB	216.172.63.129	video/mp4	-	-	http://216.172.63.129/remote_control.php?time...
2014-06-24 11:02:27	192.168.12.62	varun_5140	Default	-	9.87 MB	www.whatsappmasti.com	video/3gpp	-	-	http://www.whatsappmasti.com/data/5531.html
2014-06-24 01:00:27	192.168.12.58	payal_5845	Default	-	9.78 MB	drive.google.com	-	-	-	https://drive.google.com:443
2014-06-24 00:47:20	192.168.12.58	payal_5845	Default	-	9.79 MB	drive.google.com	-	-	-	https://drive.google.com:443
2014-06-24 17:10:44	192.168.14.56	manindra_36...	Default	-	9.72 MB	www.nzimrt.co.nz	application/vnd.ms-pow...	-	-	http://www.nzimrt.co.nz/userfiles/file/conferenc...
2014-06-24 10:32:51	192.168.10.1...	rajni_17	Default	-	9.55 MB	ventunovideos.edgesuite.net	video/mp4	-	-	http://ventunovideos.edgesuite.net/769/23-06-2...
2014-06-24 15:13:54	192.168.12.65	sanjay_205	Default	-	9.2 MB	r19--sn-cvh7zn7d.googlelevi...	-	-	-	https://r19--sn-cvh7zn7d.googlevideo.com:443

Page 3 of 6170 Records per Page 25 Search

Displaying records 51 - 75 of 154

© Smile Security and Surveillance Pvt Ltd. All rights reserved

### Compliance Reports

Ethernet, 2G/3G/4G Modem Status

State	Cable	Speed	Name	Description	Mode	NW Zone	IP Address	Subnet Mask	Gateway	Priority	Delay	Loss	HW Type	MAC Address
UP		100 Mbps	WAN-1	AIRTEL LINK	STATIC	WAN	192.168.14.46	255.255.255.252	192.168.14.5	1	5 ms	0%	Ethernet	00:22:46:0f:80:60
UP		100 Mbps	WAN-2	TATA LINK	STATIC	WAN	192.168.14.74	255.255.255.248	14.100.100.9	2	25 ms	0%	Ethernet	00:22:46:0f:80:61
UP		100 Mbps	WAN-3	DR -captive	STATIC	CAPTIV...	172.16.17.3	255.255.255.248	172.16.17.1	1	-	-	Ethernet	00:22:46:0f:80:62
UP		100 Mbps	LAN-1	Core Network	STATIC	LAN	172.16.17.3	255.255.255.248	-	1	-	-	Ethernet	00:22:46:0f:80:63
UP		1 Gbps	LAN-2	Wifi Guest network	STATIC	LAN	192.168.14.62	255.255.255.0	-	1	-	-	Ethernet	00:22:46:0f:80:64
NO-HW	N/A	-	WAN-3G	Cellular	DISABLE	-	-	-	-	-	-	-	USB Modem	-
DISABLE		-	LAN-3	LAN3	DISABLE	LAN	-	-	-	1	-	-	Ethernet	00:22:46:0f:80:65

Page 1 of 1

Displaying records 1 - 7 of 7

# On-Appliance Intelligent Monitoring, Reporting & Visibility



- **In-depth Widgets & Reports , Contextual Information**

- Real time visibility into user and network activities with per user summery
- Identifying attackers/victims for quick corrective actions

- **Helps with Security & Compliance management,**

- **Forensic Analysis capability**

- Enhanced reporting and analysis provides administrators with more intelligence on the behavior of their network, users, devices, applications and threats.

- **Alert Manager warns whenever a specified event type or attack activity is detected**



User and Network activities

Comprehensive reports

The table displays live network traffic data for interface lan1. It includes columns for IP, MAC Address, Total, In, Out, Rate, Packet Rate, Last Activity, and Hostname. The data is sorted by Total traffic, with the highest being 192.168.100.11.

IP	MAC Address	Total	In	Out	Rate	Packet Rate	Last Activity	Hostname
192.168.100.11	3c:d9:2b:06:54:5a	5.99 MB	2.2 KB	6 MB	5.0 Mbps	274 pps	0 second ago	Rakeshp_NB
192.168.100.22	fb:72:aeae:4:7d:d2	3.56 MB	3.56 MB	-	3.0 Mbps	66 pps	0 second ago	Bharath_PC
192.168.100.25	00:05:ib:7:08:ae:0a	1.84 MB	130.85 KB	1.7 MB	1.5 Mbps	242 pps	0 second ago	Rupesh_NB
192.168.100.32	fb:72:aeae:4:54:d2	1.23 MB	1.22 MB	24.35 KB	1.0 Mbps	106 pps	0 second ago	Sultan_PC
192.168.100.38	fb:06:aeae:4:7d:5a	1.23 MB	1.23 MB	-	1.0 Mbps	40 pps	8 seconds ago	Deepti_PC
192.168.100.26	3c:72:aeae:4:5a:d2	988.18 KB	979.64 KB	8.53 KB	809.5 Kbps	35 pps	0 second ago	Praveen_PC
192.168.100.55	fb:06:aeae:4:7d:54	513.68 KB	432.45 KB	81.25 KB	420.8 Kbps	104 pps	0 second ago	Rahul_Ipad
192.168.100.65	00:05:ib:7:08:ae:0a	215.77 KB	23.85 KB	191.93 KB	176.8 Kbps	33 pps	0 second ago	Paul_PC
192.168.100.35	fb:72:aeae:4:7d:d2	111.4 KB	111.4 KB	-	130.4 Kbps	19 pps	0 second ago	Nani_NB
192.168.100.75	00:05:ib:7:08:ae:0a	79.14 KB	77.33 KB	1.81 KB	64.8 Kbps	9 pps	0 second ago	Anoop_PC

Live network Traffic

# Our customers ..



**Jammu & Kashmir Police**  
The Saga Of Sacrifice And Courage



**RAJIV GANDHI CANCER INSTITUTE  
& RESEARCH CENTRE**

**RG Stone** Urology & Laparoscopy Hospital  
Simplifying Surgeries



**FORTUNE**  
Member ITC's hotel group





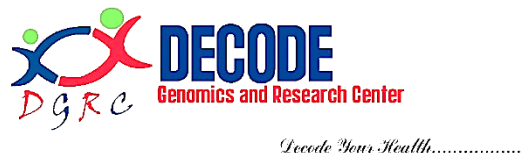
# Our customers ....(Nepal)



**बनेपा नगरपालिका**  
बनेपा, नेपाल



**सिद्धिचरण नगरपालिका**  
कोशी प्रदेश, ओखलढुंगा, नेपाल



Shree Gas Udhvoo



Baba Gas Udhvoo



Lumbini Gas Udhvoo



Elite  
Construction

A close-up photograph of a right hand holding a black fountain pen, writing the words "Thank you" in a fluid, cursive script on a white surface. The pen is black with silver-colored accents. The hand is positioned on the right side of the frame, with the index finger and thumb gripping the pen. The words "Thank you" are written in a dark, slightly glossy ink. The background is a plain, bright white surface. In the top right corner, there are small, faint teal-colored geometric shapes.

Thank you